

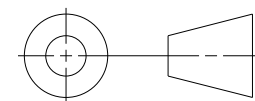
1. REFER TO PRODUCT MANUAL ON NI.COM FOR MORE DETAILS.  
 NOTES: UNLESS OTHERWISE SPECIFIED.

METRIC

UNLESS OTHERWISE SPECIFIED  
 DIMENSIONS ARE IN MILLIMETERS  
 AND [INCHES].

DO NOT SCALE DRAWING

THIRD ANGLE PROJECTION



CUSTOMER DRAWING



AUSTIN, TEXAS

TITLE

NI 9252 37-POS

SIZE CODE IDENT NO. MM/DD/YYYY

B 7U296

03/28/2019

SCALE: 1/1

SHEET | OF |