

3 OPTIONAL LIGHTPIPE SHOWN INSTALLED. REFER TO PRODUCT MANUAL FOR ADDITIONAL INSTRUCTIONS.

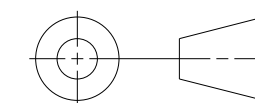
- 2. DIMENSIONS IN ( ) ARE FOR REFERENCE ONLY.
  - 1. REFER TO PRODUCT MANUAL ON NI.COM FOR MORE DETAILS
- NOTES: UNLESS OTHERWISE SPECIFIED.

CUSTOMER DRAWING

UNLESS OTHERWISE SPECIFIED  
 DIMENSIONS ARE IN INCHES AND  
 [MILLIMETERS].

DO NOT SCALE DRAWING

THIRD ANGLE PROJECTION



AUSTIN, TEXAS

TITLE

NI USB-6363  
 OEM DEVICE

SIZE CODE IDENT NO. MM/DD/YYYY

C7U296

09/04/2019

SCALE: 1/1

SHEET 1 OF 1