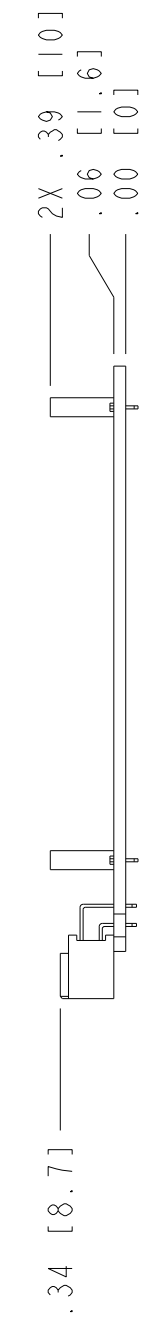
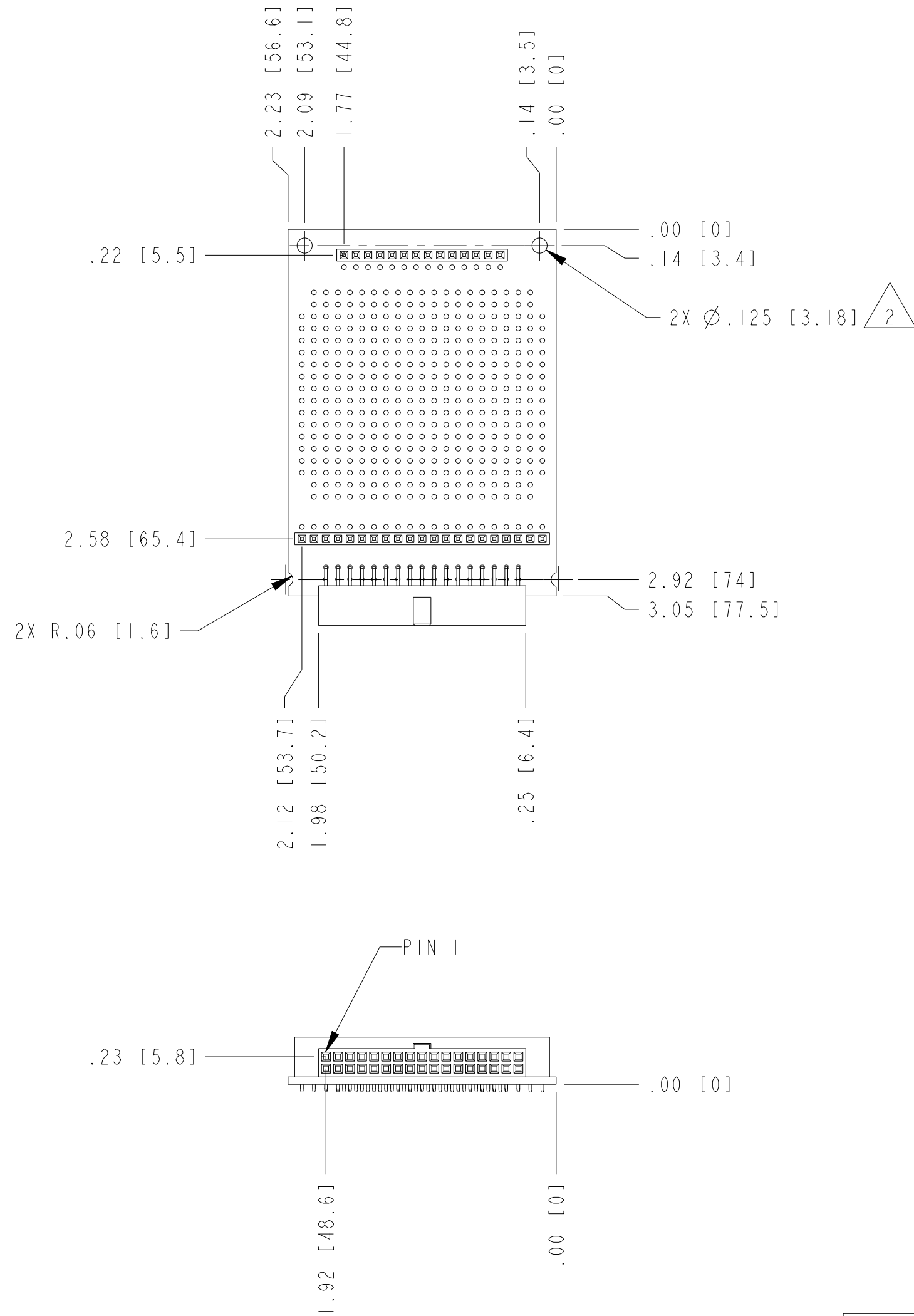


ISOMETRIC VIEW



△ 2 .375 STANDOFFS ARE RECOMMENDED FOR USE WITH THE myRIO-1900.

1. REFER TO PRODUCT MANUAL ON NI.COM FOR MORE DETAILS.

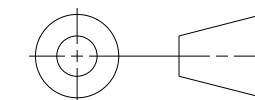
NOTES: UNLESS OTHERWISE SPECIFIED.

CUSTOMER DRAWING

UNLESS OTHERWISE SPECIFIED
 DIMENSIONS ARE IN INCHES AND
 [MILLIMETERS].

DO NOT SCALE DRAWING

THIRD ANGLE PROJECTION



AUSTIN, TEXAS

TITLE

NI myRIO EXPANSION PORT
 (MXP) PROTOBOARD ACCESSORY

SIZE CODE IDENT NO. MM/DD/YYYY

C 7U296

08/13/2013

SCALE: 1/1

SHEET 1 OF 1