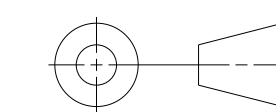


- 7. REFER TO PRODUCT MANUAL ON NI.COM FOR MORE DETAILS.
- 6 USER MUST PROVIDE MINIMUM COOLING/VENTING CLEARANCE AS SHOWN. FAILURE TO PROVIDE THIS CLEARANCE MAY RESULT IN CHASSIS OR MODULE THERMAL RELATED FAILURES.
- 5 BLACK PC-ABS COLOR.
- 4 NI COMPASS WHITE PC-ABS COLOR.
- 3 NI COMPASS BLUE COLOR.
- 2 NI COMPASS WHITE COLOR.
- 1 FOUR M4 THREAD BOTTOM FEET MOUNTING HOLES MAY BE USED FOR MOUNTING CHASSIS IN CUSTOM APPLICATIONS.

NOTES: UNLESS OTHERWISE SPECIFIED.

UNLESS OTHERWISE SPECIFIED  
 DIMENSIONS ARE IN INCHES AND  
 [MILLIMETERS].

DO NOT SCALE DRAWING  
 THIRD ANGLE PROJECTION



<b>NATIONAL INSTRUMENTS®</b>		AUSTIN, TEXAS
TITLE		
CUSTOMER DRAWING, CHASSIS ASSEMBLY, PXIe-1085		
SIZE CODE	IDENT NO.	MM/DD/YYYY
D 7U296		08/30/2012
SCALE: 1/2	SHEET 1 OF 2	

