

4 SELECT PCB COMPONENTS SHOWN TO CLARIFY BOUNDARIES OF EAST EDGE ADD-IN CARD RETENTION ZONE.

3 EAST EDGE ADD-IN CARD ZONE DEFINED TO ENABLE ADDITIONAL SYSTEM LEVEL RETENTION. USE OF ELECTRICALLY INSULATING MATERIALS WHEN CONTACTING PRIMARY OR SECONDARY SURFACE OF PCB IS RECOMMENDED. SEE ELECTRONIC FILE FOR DIMENSIONS.

2. UNLESS OTHERWISE SPECIFIED, ALL TOLERANCES ARE $\pm .005$ [0.13].

1. REFER TO PRODUCT MANUAL ON NI.COM FOR MORE DETAILS

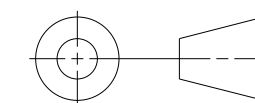
NOTES: UNLESS OTHERWISE SPECIFIED.

CUSTOMER DRAWING

UNLESS OTHERWISE SPECIFIED
 DIMENSIONS ARE IN INCHES AND
 [MILLIMETERS].

DO NOT SCALE DRAWING

THIRD ANGLE PROJECTION



AUSTIN, TEXAS

TITLE

PCIe-1433
 CAMERALINK FRAME GRABBER

SIZE CODE IDENT NO. MM/DD/YYYY

C7U296

08/20/2020

SCALE: 1/1

SHEET 1 OF 3

4

3

2

1

COPYRIGHT ©2020
NATIONAL INSTRUMENTS CORPORATION AND ITS LICENSORS. ALL RIGHTS RESERVED.

D

D

C

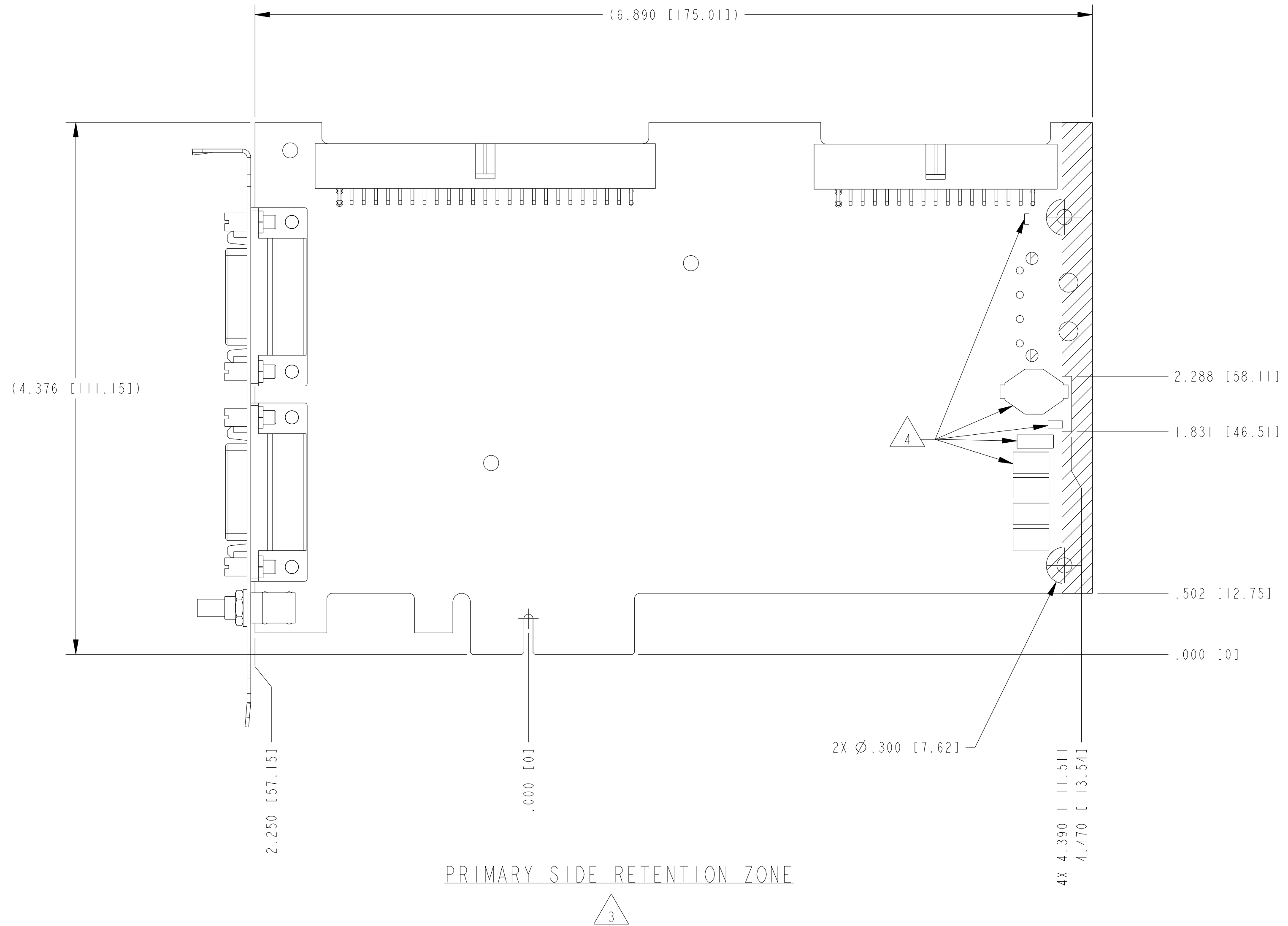
C

B

B

A

A



SIZE	CODE	IDENT NO.	MM/DD/YYYY
C	7U296		08/20/2020
SCALE: 3/2		SHEET 2 OF 3	

4

3

2

1

4

3

2

1

D

D

C

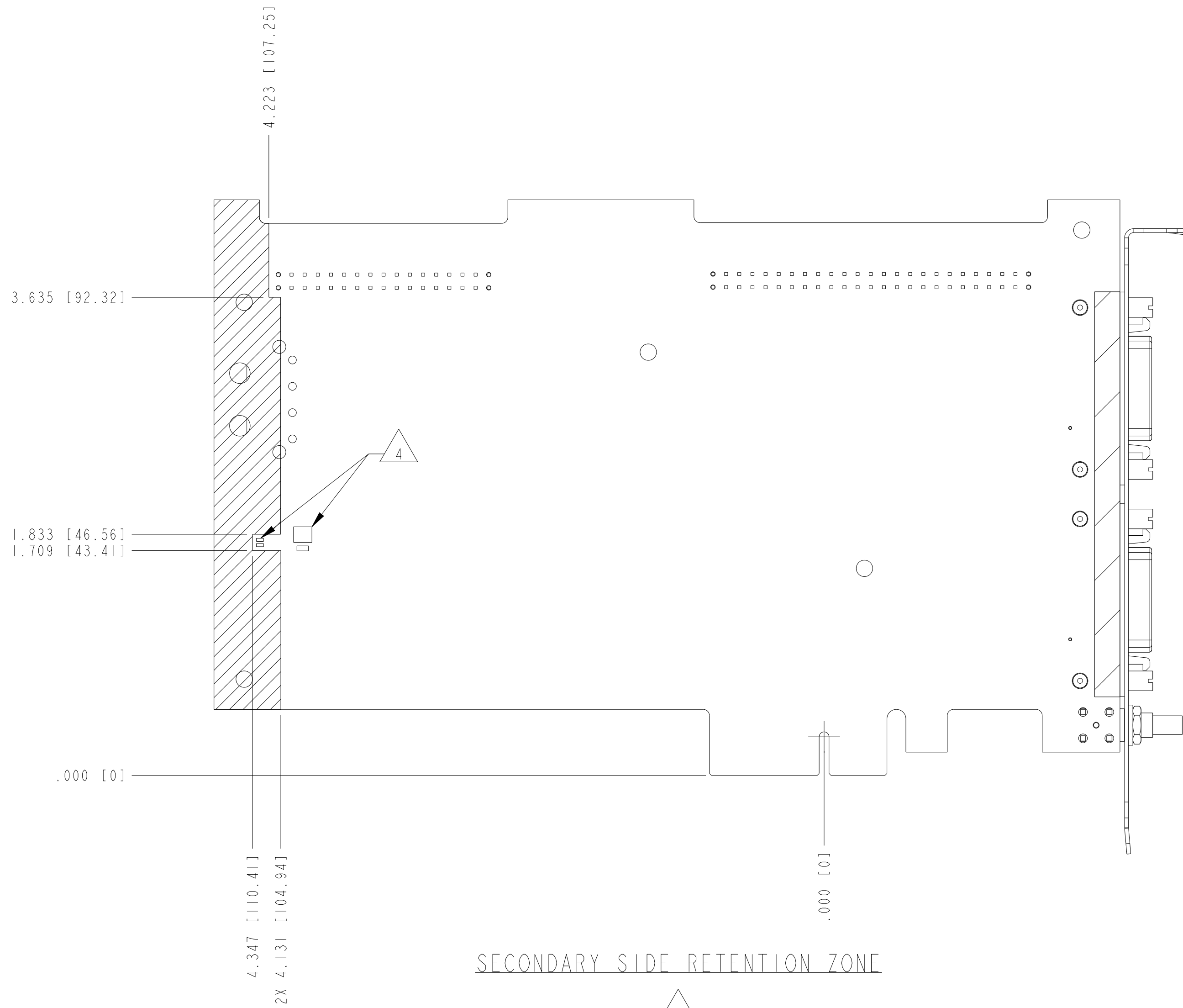
C

B

B

A

A



SIZE	CODE	IDENT NO.	MM/DD/YYYY
C	7U296		08/20/2020
SCALE:	3/2	SHEET 3 OF 3	

4

3

2

1