

No.	Items	Material	Plating, Note
1	Insulator	LCP resin(Black)	
2	Contact(Signal)	Copper alloy	Contact area: Au 0.05um min, over Pd-Ni 0.635um min, over Ni 1.27um min Terminal area: Au coat
3	Contact(Ground)		
4	Shield cover	Carbon steel	Nickel plating
5	Gasket	Copper alloy	Nickel plating
6	Solder post	Carbon steel	Solder plating
7	Hexagon screw	Steel	Nickel plating, Append
8	Balancer	SUS	
9	Key	LCP resin(White)	See Table6

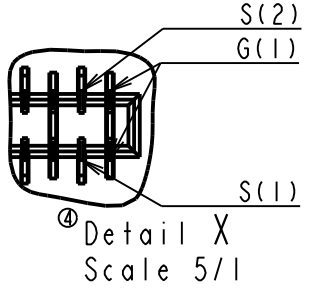
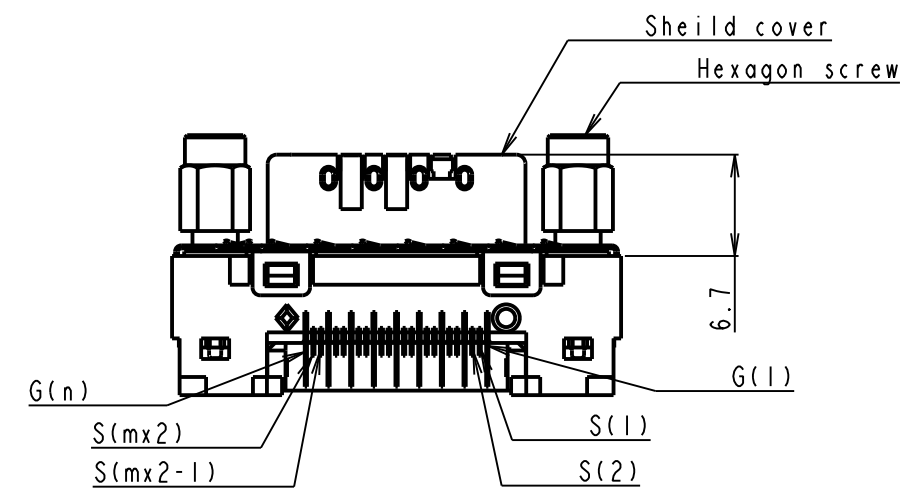
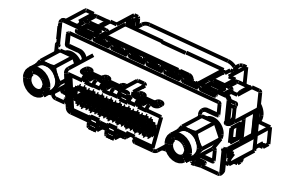
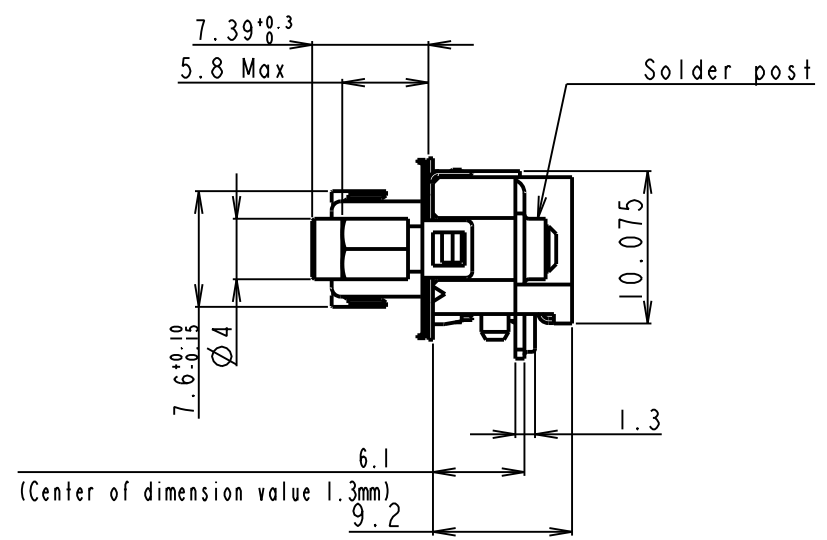
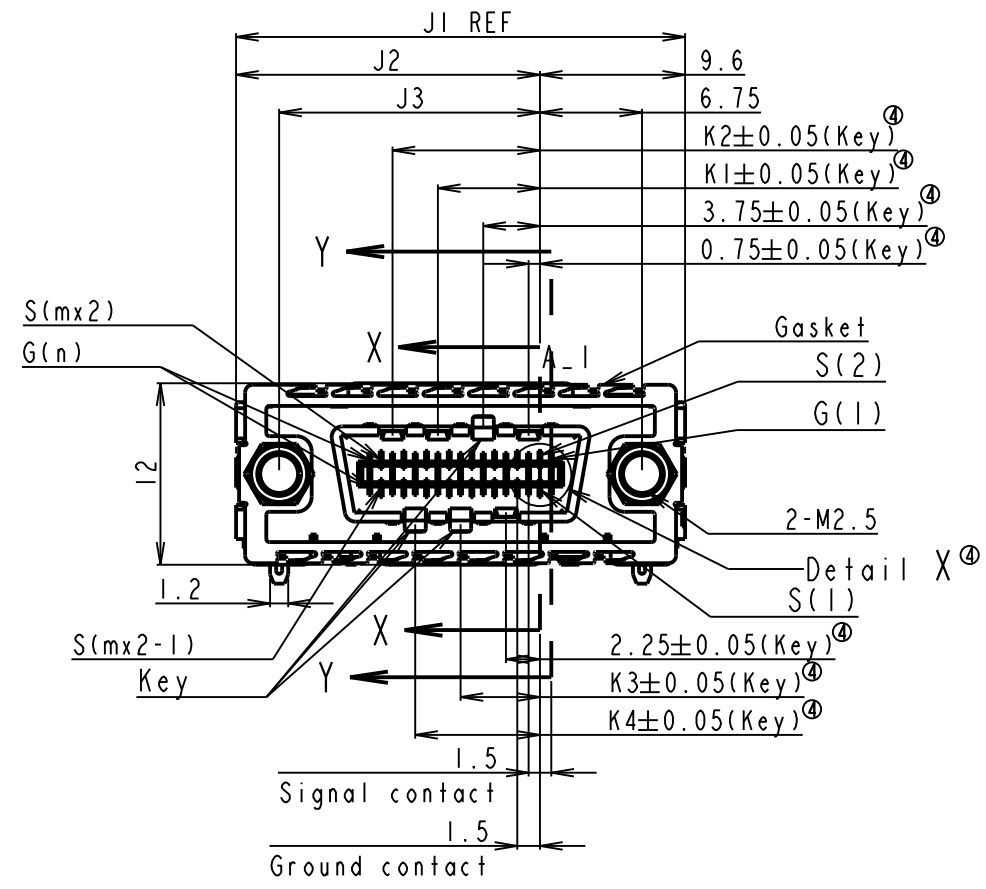


Table 1

Part No.	m	n	J1	J2	J3	K1	K2	K3	K4
FCN-268D008-G/**	1-8	1-9	29.8	20.15	17.25	6.75	9.75	5.25	8.25
FCN-268D024-G/**	1-24	1-25	53.8	44.15	41.25	30.75	33.75	17.25	32.25

Unit : mm

DOCUMENT CONTROL SECTION

DATE

Rem3) This drawing shows FCN-268D008-G/01#05.  
 Rem2) Coplanarity should be less than 0.1mm.  
 Rem1) Unless specified, dimensions are in mm and their tolerances are ±0.5mm.

EDIT.	DATE	DESIGN.	CHECK	DESCRIPTION	TITLE	DRAW.NO.	CUST.
04	Dec.20.'02			④mark revised(Total 13places, 11places on this page)	MICRO GIGACN™ Cable I/O Jack screw rock type	DAPD-02-0062	FUJITSU COMPONENT LIMITED
03	Aug.29.'02	T.Kondou	J.Akama	All reviced			
02	Jul.10.'02	T.Kondou		All reviced M.Kobayashi			
DESIG.	Jun.11.'02	T.Kondou	CHECK	APPR. M.Kobayashi			1 / 7

1

2

3

4

5

6

7

8

A

B

C

D

A

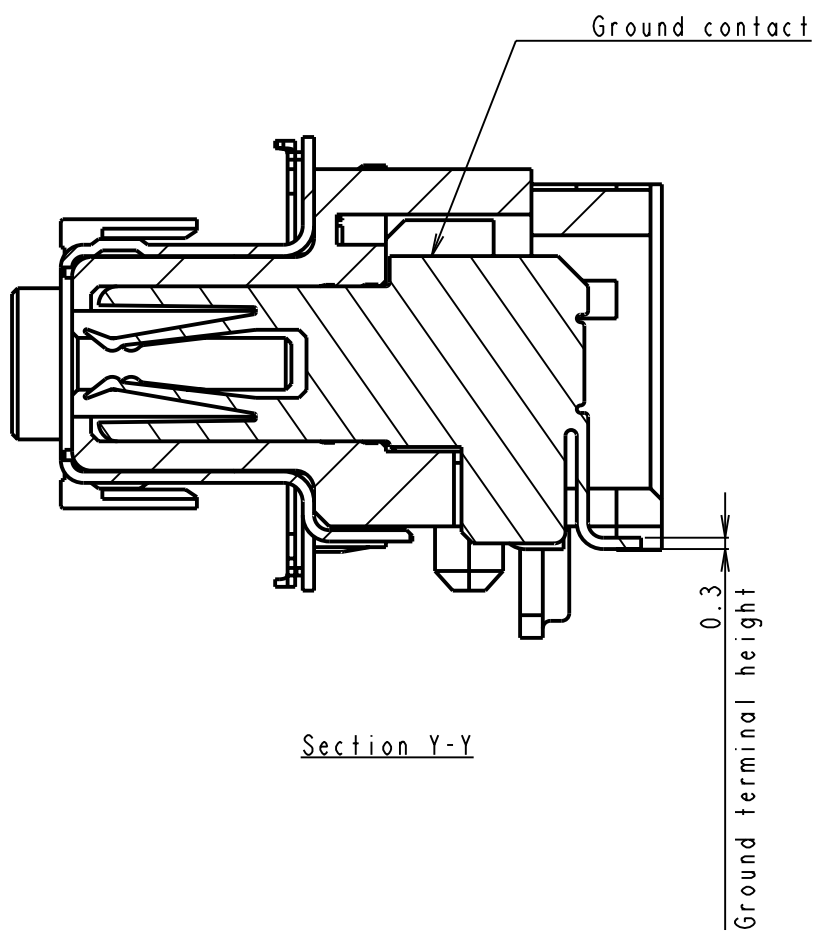
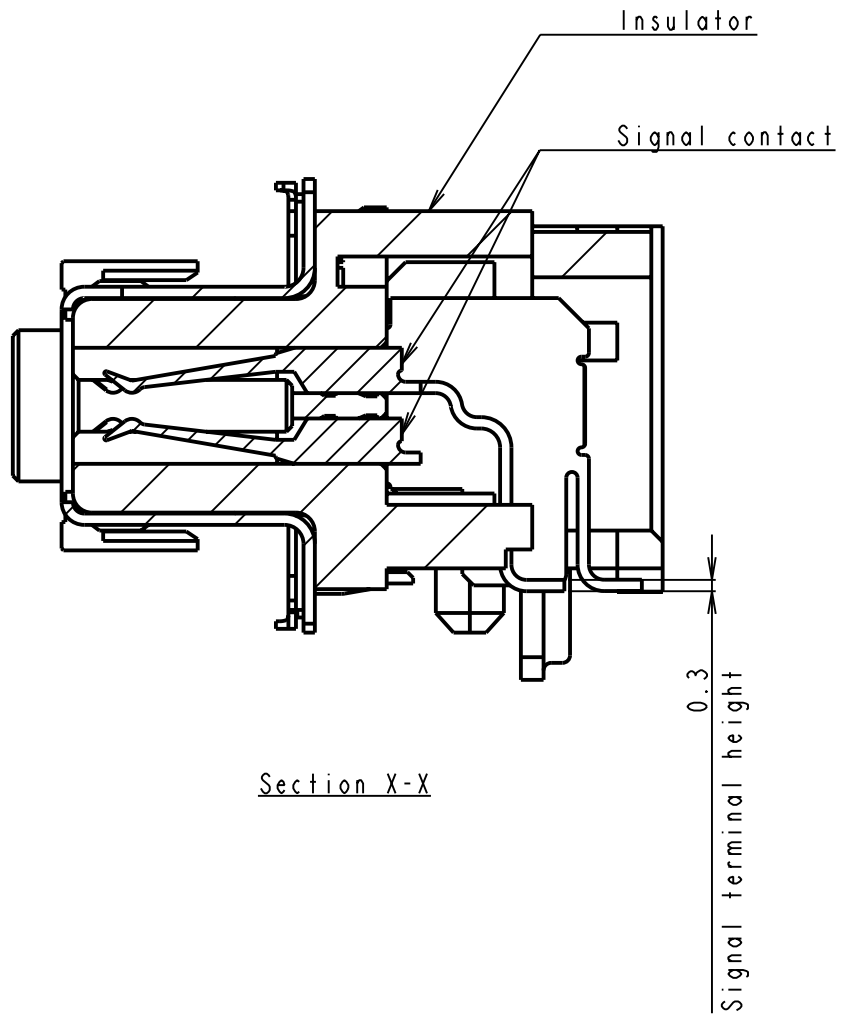
B

C

D

E

F



DATE

DOCUMENT CONTROL SECTION

↑

				TITLE MICRO GIGACN™ Cable I/O Jack screw rock type	
				DRAW. NO. DAPD-02-0062	CUST.
EDIT.	DATE	DESIGN.	CHECK	DESCRIPTION	
DESIG.			CHECK	APPR.	FUJITSU COMPONENT LIMITED
					2 / 7

1

2

3

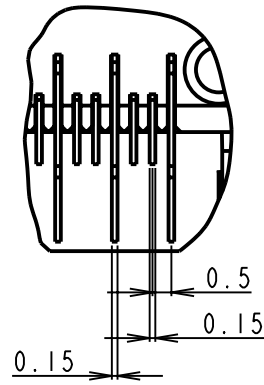
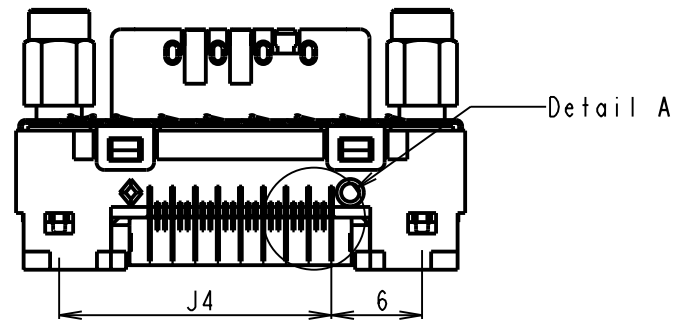
5

6

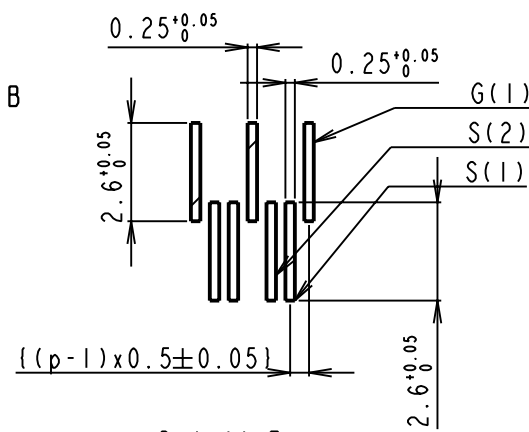
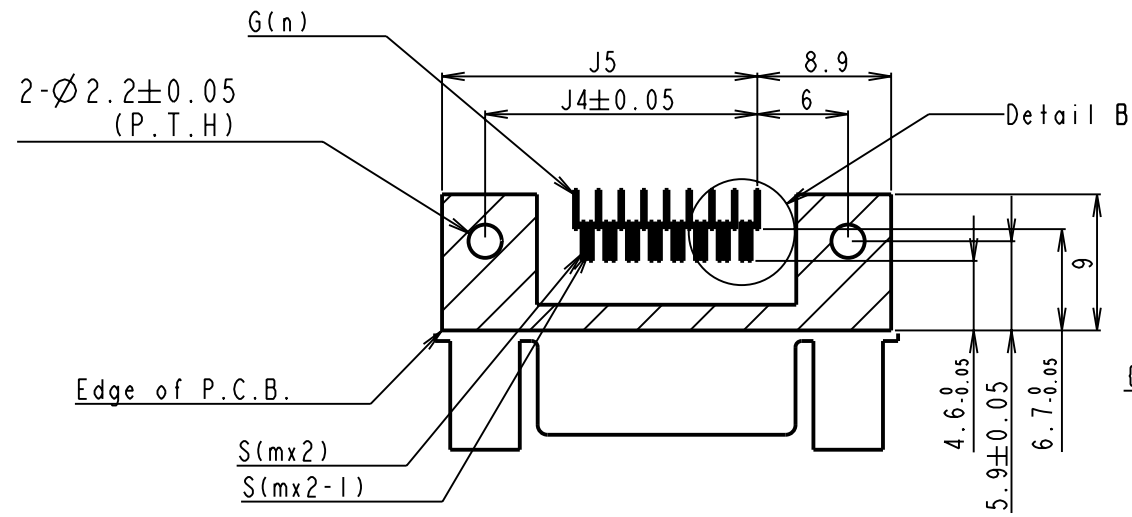
7

FCN-268D0\*\* - G/0\*

No mold pin



Detail A



Detail B

Recommended P.C.B. dimensions

Table 2

Part No.	m	n	p	J4	J5
FCN-268D008-G/0*	1-8	1-9	1-25	18	20.9
FCN-268D024-G/0*	1-24	1-25	1-73	42	44.9

DOCUMENT CONTROL SECTION

DATE

				TITLE MICRO GIGACN™ Cable I/O Jack screw rock type	
				DRAW. NO. DAPD-02-0062	
				CUST.	
EDIT.	DATE	DESIGN.	CHECK	DESCRIPTION	
DESIG.		CHECK		APPR.	
				FUJITSU COMPONENT LIMITED	
				3 / 7	

FCN-268D0\*\*-G/1\*

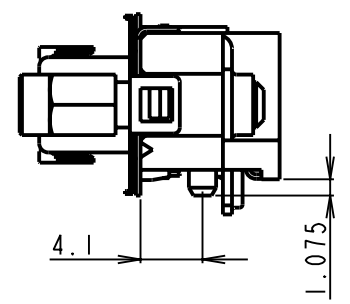
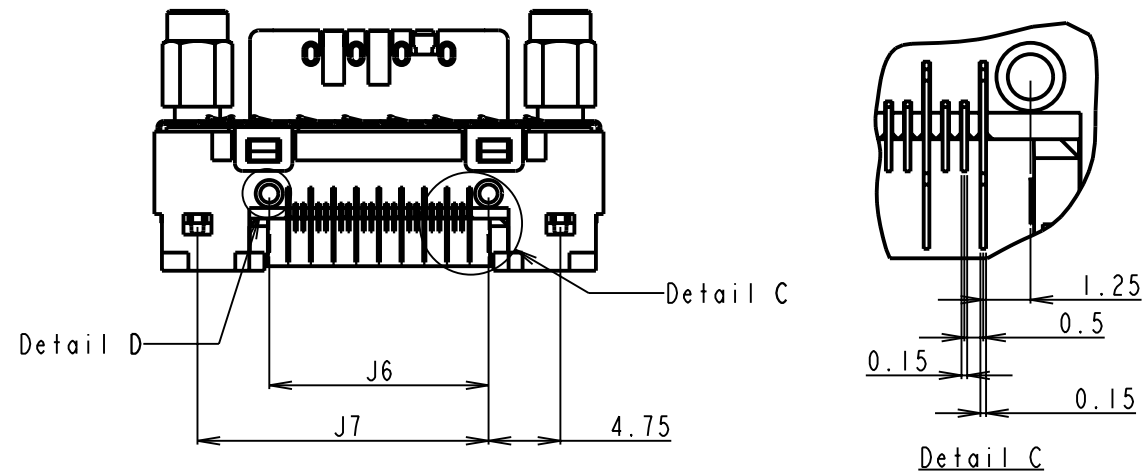
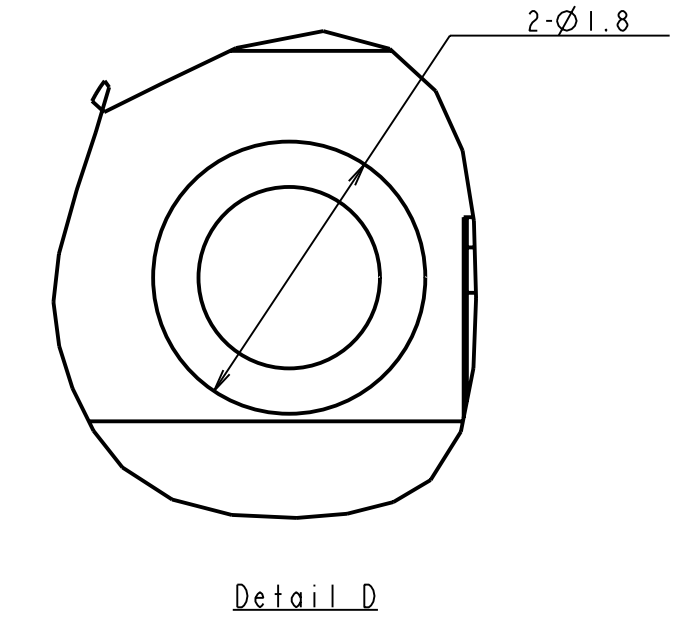
With alignment pin

FCN-268D0\*\*-G/2\*

With crush pin

FCN-268D0\*\*-G/1\*

Alignment pin



FCN-268D0\*\*-G/2\*

Crush pin

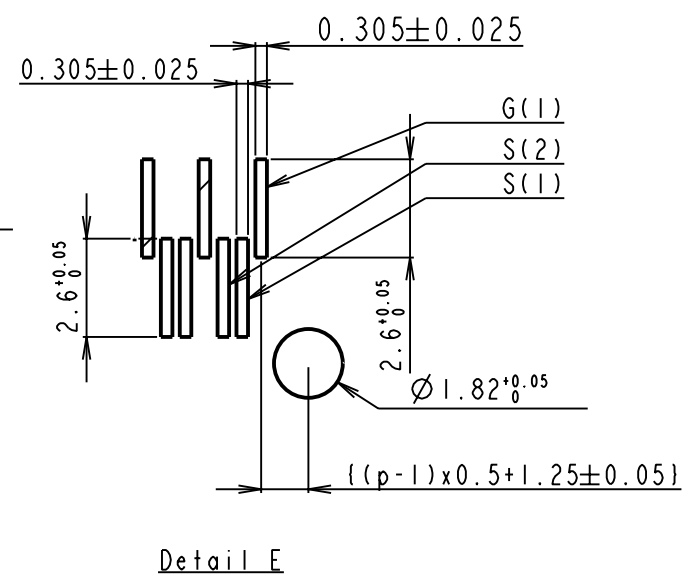
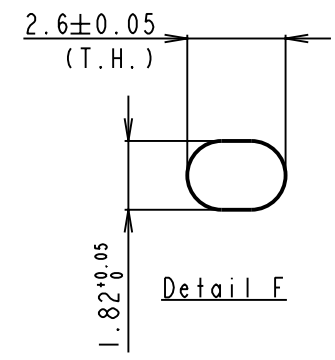
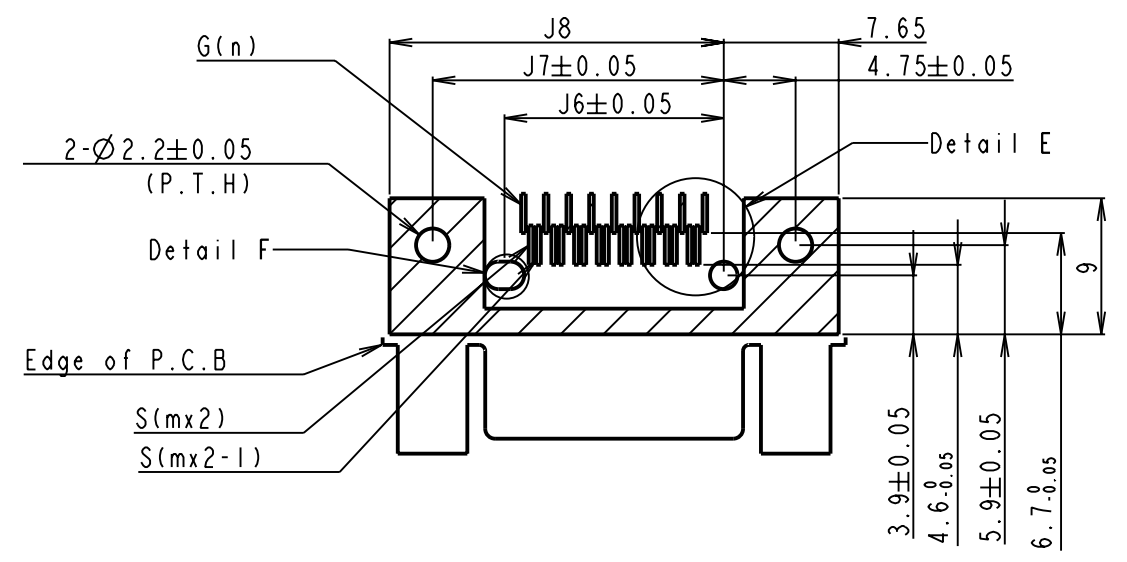
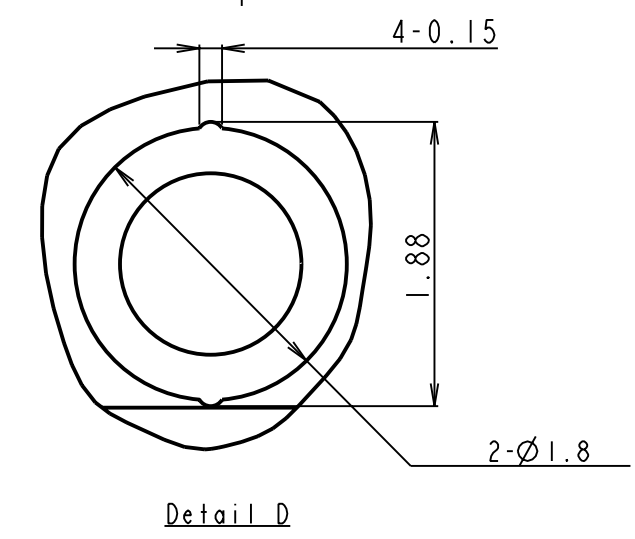


Table 3

Part No.	m	n	p	J6	J7	J8
FCN-268D008-G/1*	1-8	1-9	1-25	14.5	19.25	22.15
FCN-268D008-G/2*	1-8	1-9	1-25	14.5	19.25	22.15
FCN-268D024-G/1*	1-24	1-25	1-73	38.5	43.25	46.15
FCN-268D024-G/2*	1-24	1-25	1-73	38.5	43.25	46.15

DOCUMENT CONTROL SECTION

DATE

				TITLE MICRO GIGACN™ Cable I/O Jack screw rock type	
				DRAW.NO. DAPD-02-0062	CUST.
EDIT.	DATE	DESIGN.	CHECK	DESCRIPTION	
DESIG.			CHECK	APPR.	
				FUJITSU COMPONENT LIMITED	4 / 7

FCN-268D0\*\*-G/3\*  
With daiamond pin

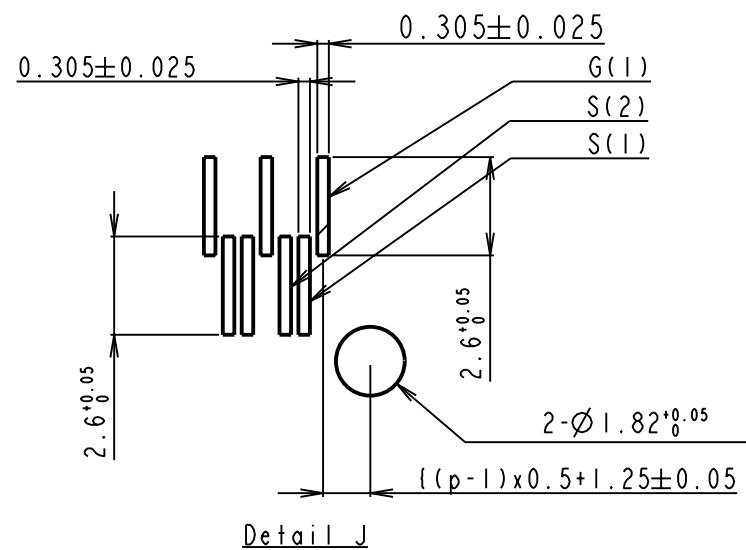
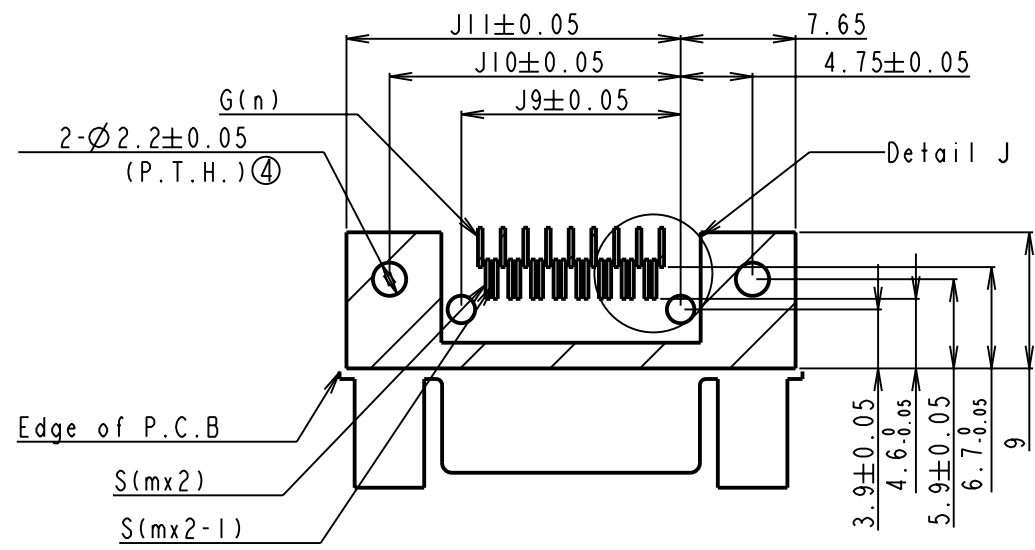
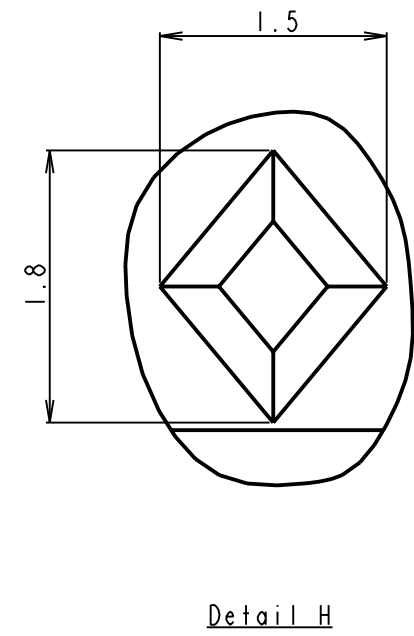
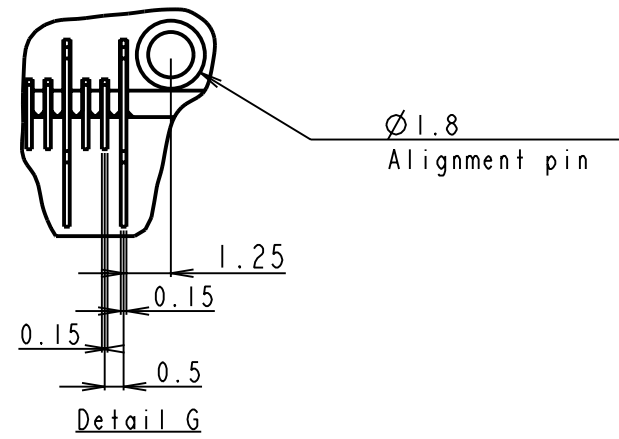
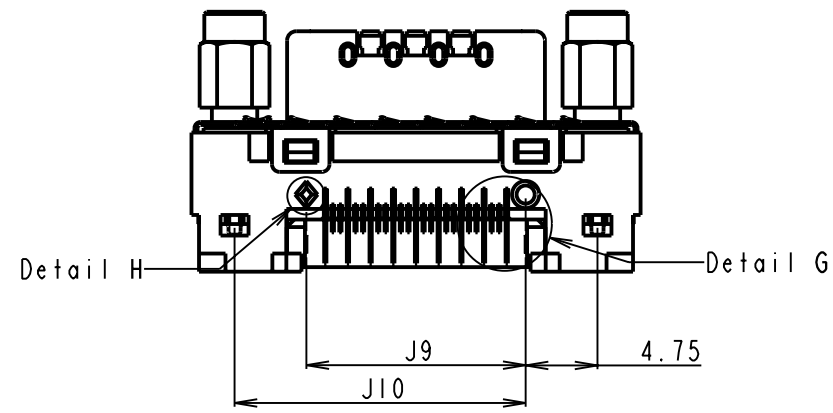


Table 4

Part No.	m	n	p	J9	J10	J11
FCN-268D008-G/3*	1-8	1-9	1-25	14.5	19.25	22.15
FCN-268D024-G/3*	1-24	1-25	1-73	38.5	43.25	46.15

DOCUMENT CONTROL SECTION

DATE

				TITLE MICRO GIGACN™ Cable I/O Jack screw rock type	
				DRAW. NO. DAPD-02-0062	
				CUST.	
04	Dec.20.'02			④ mark revised (1 place)	
EDIT.	DATE	DESIGN.	CHECK	DESCRIPTION	
DESIG.			CHECK	APPR.	
				FUJITSU COMPONENT LIMITED	
				5 / 7	

A

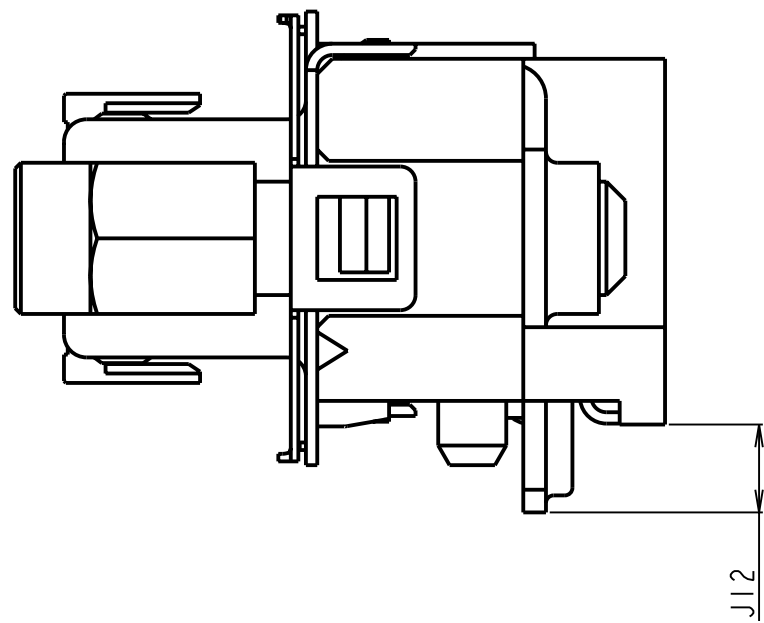
B

C

D

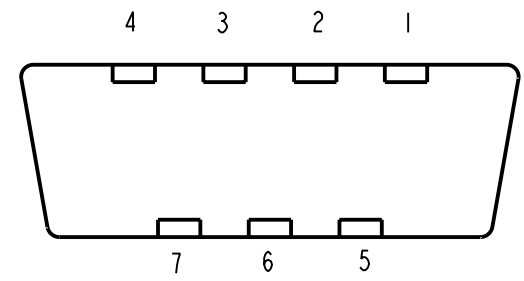
FCN-268D0\*\*-G/\*  
Solder post length

FCN-268D0\*\*-G/\*\*\*  
Key location



④ Table 6

Part No.	Key configuration #1
FCN-268D0**-G/**	None
FCN-268D0**-G/***01	Append 2pcs.
FCN-268D0**-G/***02	1, 3, 7
FCN-268D0**-G/***03	1, 4, 6
FCN-268D0**-G/***04	2, 4, 5
FCN-268D0**-G/***05	2, 6, 7
FCN-268D0**-G/***06	3, 5, 6



Key configuration #1

Table 5

Part No.	P.C.B. thickness	J12
FCN-268D0**-G/*0	1.6	2.325
FCN-268D0**-G/*1	2.4	3.125
FCN-268D0**-G/*3	4.0	4.725

DOCUMENT CONTROL SECTION

DATE

				TITLE MICRO GIGACN™ Cable I/O Jack screw rock type	
				DRAW.NO. DAPD-02-0062	
				FUJITSU COMPONENT LIMITED	
				6 / 7	
04 Dec.20 '02				④ mark revised (1 place)	
EDIT. DATE	DESIGN.	CHECK		DESCRIPTION	
DESIG.		CHECK		APPR.	

A

B

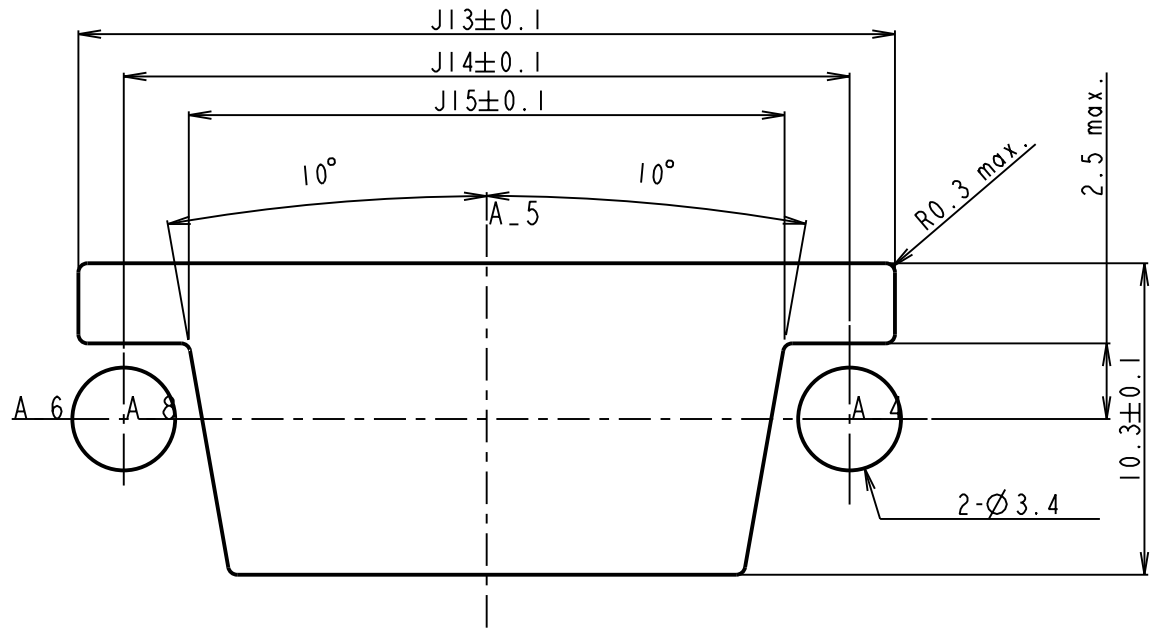
C

D

E

F

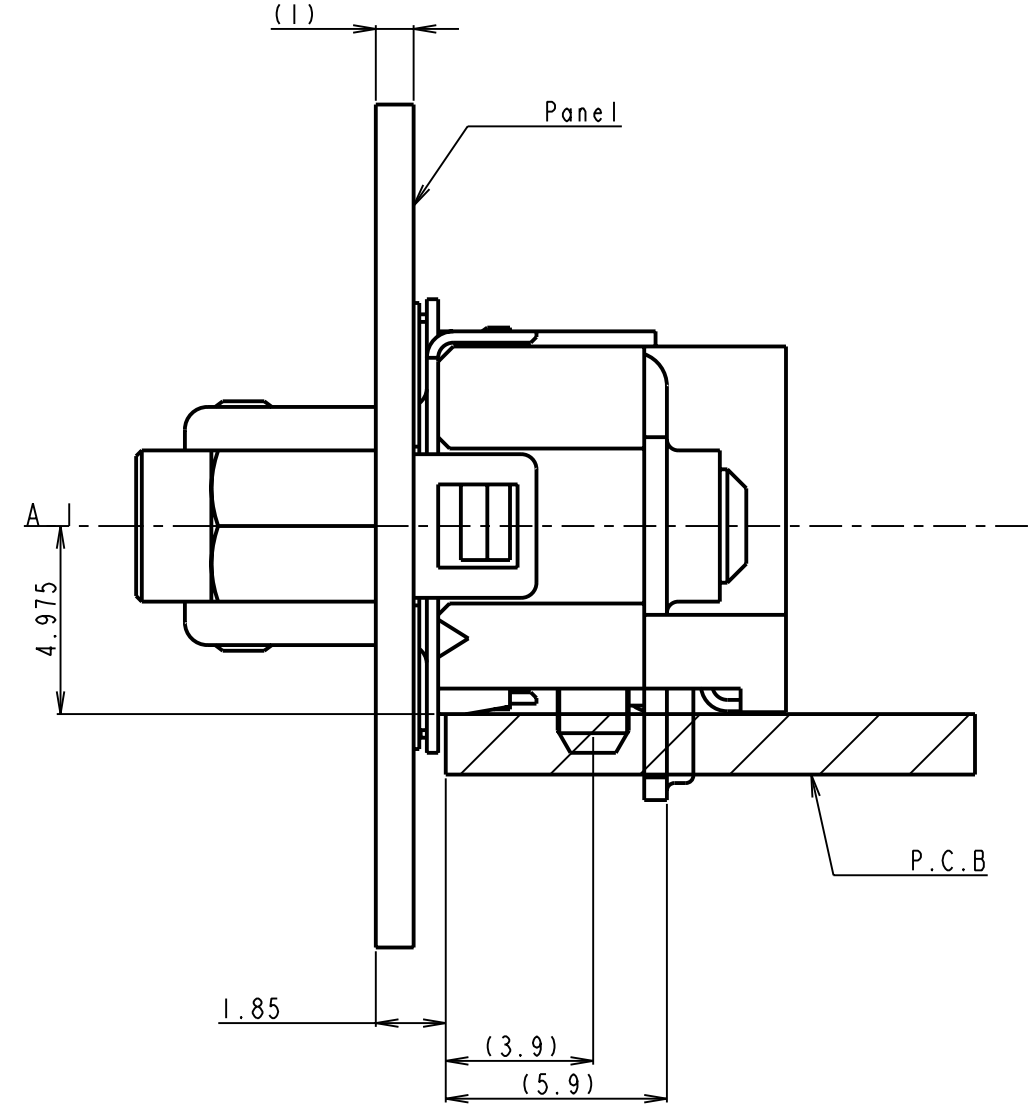
FCN-268D0\*\*-G/\*\*  
panel cutout



Panel cutout  
Recommended thickness of panel : 1±0.1mm

Table 7

Part No.	m	n	J13	J14	J15
FCN-268D008-G/**	1-8	1-9	27	24	19.7
FCN-268D024-G/**	1-24	1-25	51	48	43.7



Recommended panel cutout position

DOCUMENT CONTROL SECTION  
DATE

				TITLE MICRO GIGACN™ Cable I/O Jack screw rock type	
				DRAW.NO. DAPD-02-0062	
				FUJITSU COMPONENT LIMITED	
EDIT.	DATE	DESIGN.	CHECK	DESCRIPTION	CUST.
DESIG.			CHECK	APPR.	7 / 7